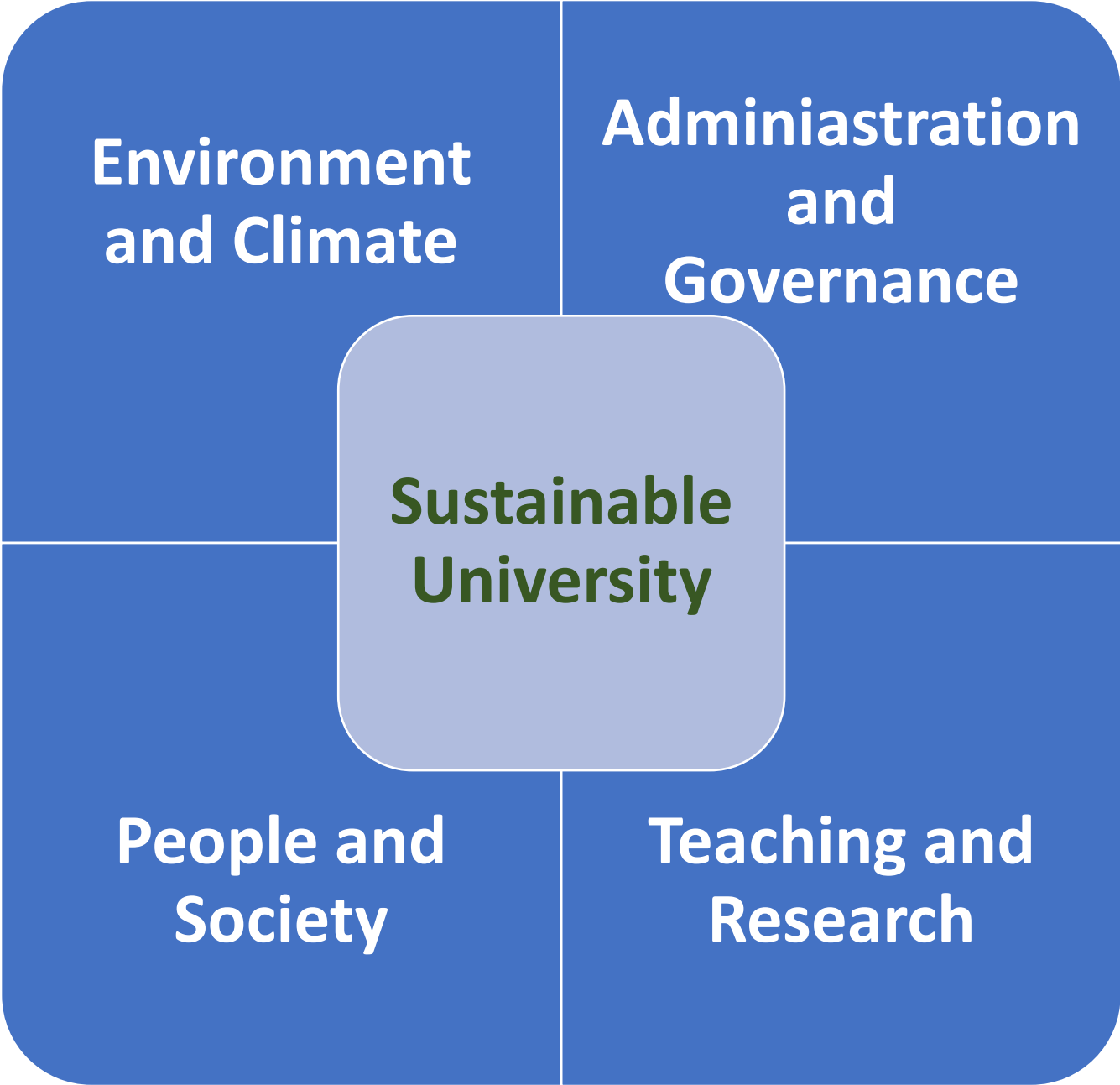


SUSTAINABILTY REPORT



**BML MUNJAL UNIVERSITY
SIDHARAWALI GURUGRAM**

Prepared by: EM Project Services: A-615, Shastri Nagar-New Delhi-110052



Contents

1. Introduction to the sustainable development	5
2. Environment stability.....	8
A. Sustainability Snapshot: BML Munjal University.....	9
B. Energy.....	11
C. Built Environment & Habitat	14
D. Water Management.....	22
E. Waste management.....	26
F. Community Engagement.....	31
4. Social Sustainability.....	32
A. Prelude	32
B. Resolve.....	33
C. Intent and Outcomes	33
D. Sustainable Development Goals and University: Demonstration of the correlation at BML Munjal University	33
E. Model for self-assessment.....	50
F. Strategy and Continued activities.....	51
4. Legal Review of Aspects of Sustainability	51
A. Introduction.....	51
B. Review of the various aspects of sustainability	51
I Grant of permission for change of land use	51
II. Height clearance	51
III. Occupation certificates	51
IV. Grant of concern by local Authority having jurisdiction.....	51
V. Fire-No objection certificate	51
VI. Environment Impact analysis -approval	51
VII. Diesel Generator Sets	51
VII. Water Management.....	52
IX. Waste Management Agreement.....	52
X. Lift Registration and annual certificates.....	52
XI. Commitment to women empowerment.....	52
XII. Committee on Gender Sensitation Against Sexual harassment	52
5. Governance & Ethical Framework	54

A. About BML Munjal University	54
B. Accreditation	57
C. Rankings	57
D. Recognitions	58
E. Collaborations	58
F. University vision	61
G. University Mission	61
H.Pledge to empower women	62
Ethics and Governance	62
6.Conclusion	62
Annexure	64
A. Sustainable Development Goals	64
B. Credential of professional	65

1. Introduction to the sustainable development

Sustainability is not a choice it has to be imperatively practiced. The development that we target should be sustainable. We as human beings think that we are leaving resources for our future generations but that thought is not as per the principles of development. The human beings living in planet should think that the resources that are consuming are borrowed from our future generations so the consumption has to be optimized and be sustainable at all times in a manner that our future generations are not deprived of meeting any and all day-to-day requirements without lowering their standard of living.

The term Triple P refers to the concept of the triple “bottom line” as formulated by John Elkington in his book *Cannibals with Forks* (Elkington, 1998).

According to the triple bottom line concept, equal weight should be given in corporate activities to the following three aspects:

- “people”, the social consequences of its actions
- “planet”, the ecological consequences
- “profit”, the economic profitability of companies (being the source of “Prosperity”)

The main point is that the “bottom line” of an organization is not only an economic-financial one; an organization is responsible to its social and ecological environment as well.

In literature, the P of People is blurred by the fact that companies should take care of their employees anyway (in “good governance”). It should be realized, however, that the P of People (in terms of sustainability) is primary related to the people of the developing countries (a matter of fair global distribution of Prosperity).

To speed up the transition, however, we need a more enhanced approach. Not a trade-off, but we need a new, better economy as suggested in the Brundtland Report (quote: “*What we need now is a new era of economic growth – growth that is forceful and at the same time socially and environmentally sustainable*”). Here, product innovation should create more value, and at the same time less eco-burden, as it is the aim of circular business solutions.

The Sustainable Development Goals are considered to be a roadmap for humanity where both the aspects of human and planetary wellbeing are regarded. The pandemic caused by the novel coronavirus has presented both an enormous challenge and tremendous opportunities for reaching the 2030 Agenda and the Sustainable Development Goals (SDGs).

While the world was committed in implementing its SDGs to achieve the agenda 2030, the global phenomenon of the pandemic witnessed in the early 2020 was unusual and unprecedented due to which the aims and objectives of every organization were deeply impacted. Globally, the SDGs is not free from challenges for any organization. In order to not only overcome such challenges but also achieve the instrumentality of the SDGs, BML Munjal university has demonstrated one of its kind efforts of moving towards a healthier and safer environment by implementing the SDGs within the university campus.

What is a sustainable university?

Higher education has always been at the frontier of new thinking and practice in the world, but with the environmental challenges growing ever steeper, the purpose of Universities needs to be re-imagined.

AT BML Munjal university the four Core Areas of University in Sustainable practices that are practiced are:

1. Administration and Governance

- A. Leadership,
- B. Ethics,
- C. Human Resources,
- D. Business links,
- E. Governance,
- F. Finance

2. Teaching and Research

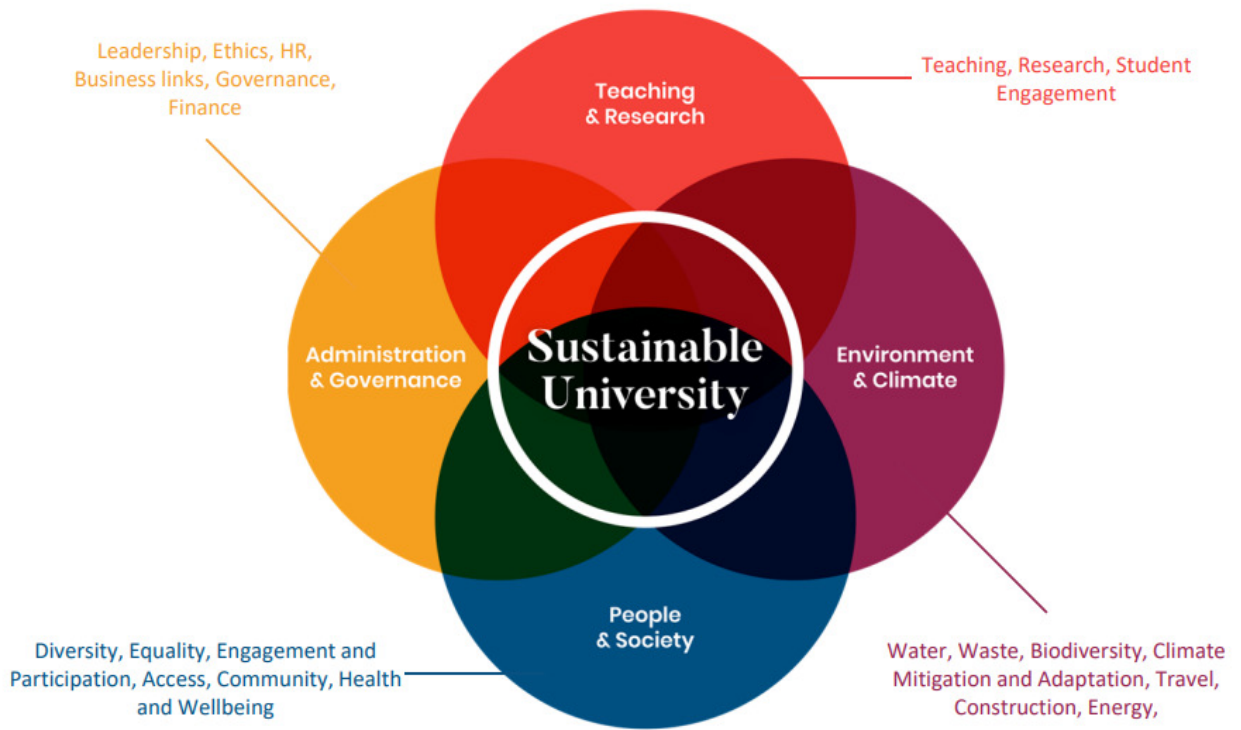
- A. Teaching,
- B. Research
- C. Student engagement

3. Environment and Climate

- A. Water
- B. Waste
- C. Bio-Diversity
- D. Climate mitigation and adaptation
- E. Travel
- F. Construction
- G. Energy

4. People and Society

- A. Diversity
- B. Equality
- C. Engagement and participation
- D. Community
- E. Health and Well Being



Source: UNDP document

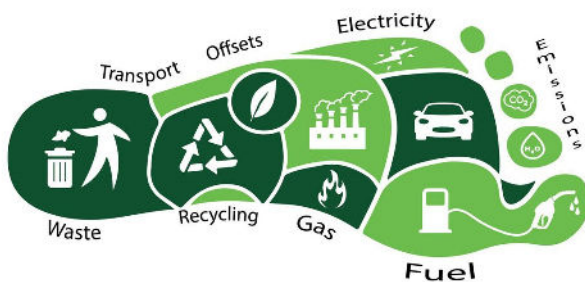
2. Environment stability



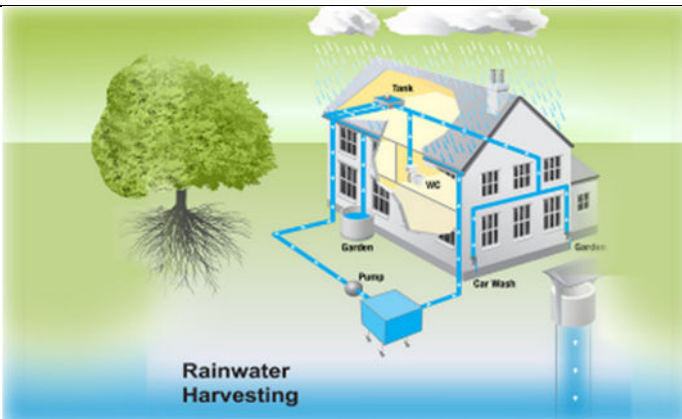
A. Sustainability Snapshot: BML Munjal University



Renewable
Energy
Generation On-
Site –Solar PV -
246 kWp-
1892512 units
since 2016



Mitigation of
Carbon Foot Print-
Annual with
Renewable energy
on site generation-
1495.084 tCO₂ eq.



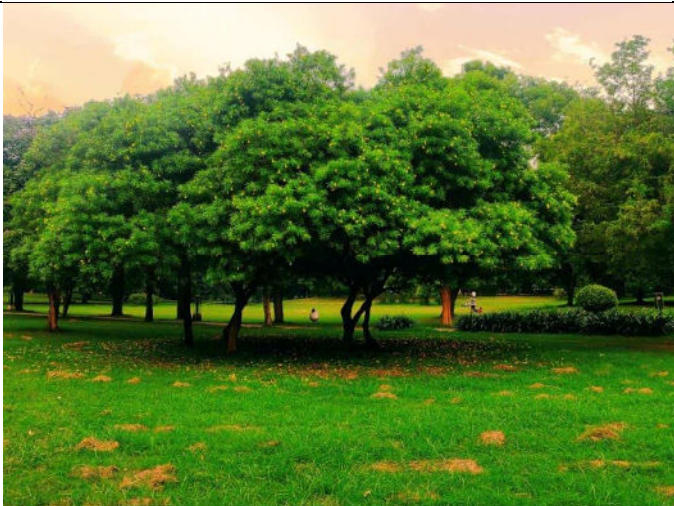
20 Nos. Rain
Water harvesting
pits installed for
ground water re-
charging



2052 Trees and
8479 sq. mts.
shrubs planted in
university
premises



Total 12924
Kilometers run
Annually in
premises-Annual



Total Green
Cover – 25374
Sq. Mts-18.57 %
of total area

On-Site composting Machine-12112 kgs-
composting done and manure used in the
university premises since April-2018



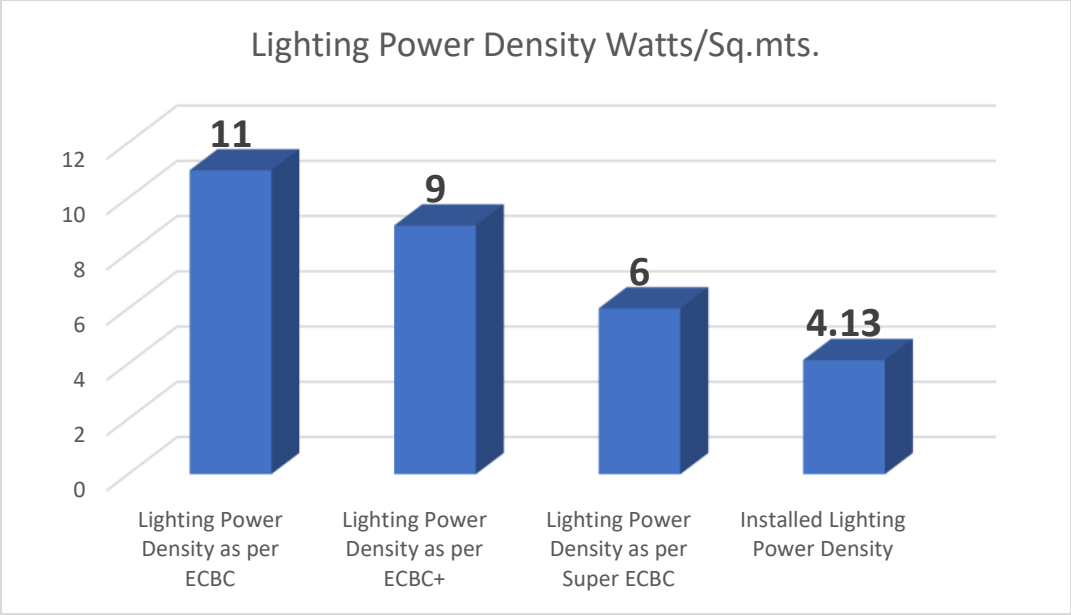
B. Energy

Lighting system in university: Energy Efficient Lighting has been used for illumination of Lighting. Lighting power density is 3.23 watts per sq.mt against the limit of 11 watts/sq. mt for ECBC building and is also less than requirement of Super ECBC building which is 6 watts per sq.mt.

Total installed lighting Power:388000 Watts (A)

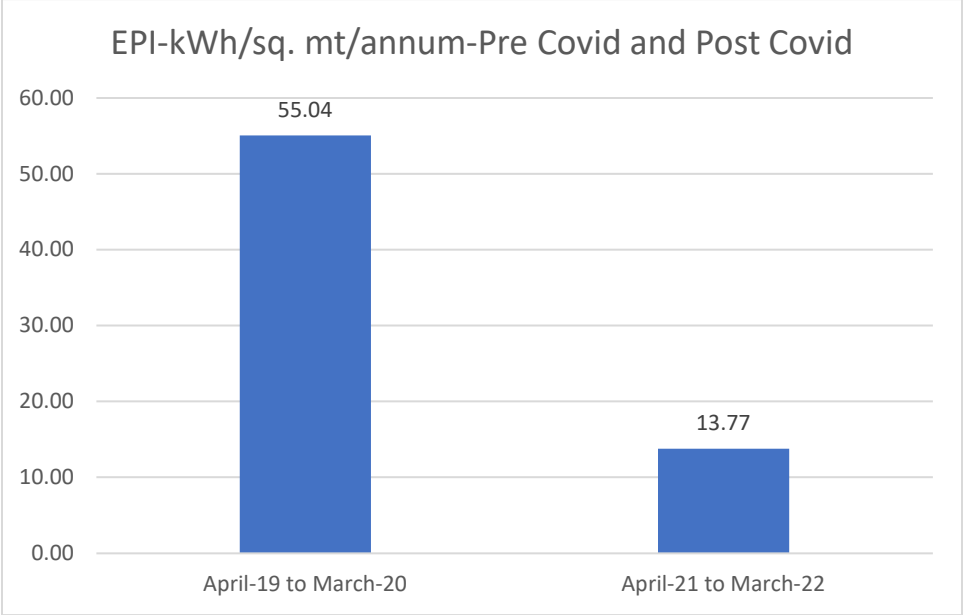
Total Built up Area: 93767 sq. mts.(B)

Lighting Power Density: = $A/B=4.13$ watts per sq. mt.



Energy Performance Index

EPI (Energy Performance Index) in kWh per sq.mts. is monitored for optimization for sustainable use of energy.



Renewable Energy system in BML Munjal university

There are four nos. solar Photovoltaic system installed at various buildings in university campus. The total capacity of installed system is 246 kWp. The following is the generation of electricity from solar PV.

S.No.	Description	Electricity -units- kWh	GHG-CO2 emissions -avoided- tCo2-eq.
1	During year-2022	249655	197.227
2	Total units since installation	1892512	1495.084

Annual Renewable Energy generation data (Solar PV)-BML Munjal University- 2022-						
S.No.	Month	Units generated- kWh - Workshop	Units generated- kWh Apartment A	Units generated- kWh - Apartment B	Units generated- kWh - Apartment C	Total Units generated- kWh -
1	Jan.22	9516	12	2	1659	11189
2	Feb.22	14545	2826	1842	2483	21696
3	Mar.22	18192	3739	3205	3168	28304
4	Apr.22	14005	3839	2959	3167	23970
5	May.22	15032	3735	2907	2980	24654
6	Jun.22	14103	3445	2490	2751	22789
7	July.22	12715	3066	2101	2755	20637
8	Aug.22	12636	2897	1933	3163	20629
9	Sep.22	11258	2486	1925	2672	18341
10	Oct.22	16600	2673	2068	2829	24170
11	Nov.22	9416	2387	1689	2301	15793
12	Dec.22	10334	2670	1917	2562	17483
	Total	158352	33775	25038	32490	249655

C. Built Environment & Habitat

Landscape:

BML Munjal university has been constructed and complies with all provisions in the building plan as approved by department including the excavated soil reused in backfilling and landscaping, use of treated water in construction phase etc. In addition, Indian Green Building Council norms were followed for the construction of building which fulfils the prescriptive requirement for construction of opaque walls for air-conditioned spaces and non-air-conditioned spaces by use of appropriate thermal insulation material to fulfil requirement.

Biodiversity

Landscape is not only for enhancement of aesthetics but also to balance, focalise, simplicity and to improve the total living environment of the people. Our surroundings make a significant contribution to the quality of life we live.

The total green area of the project is 25374 sq. mts.

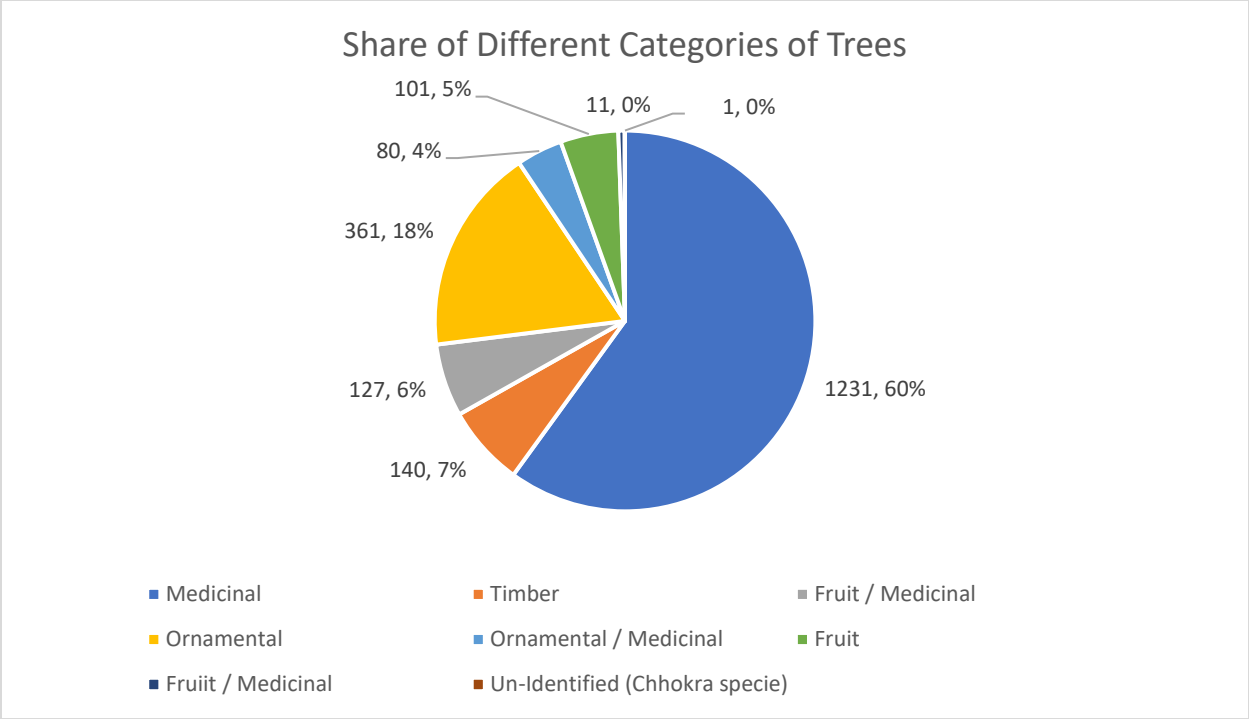
S. No.	Description	Qty.	Unit
1	Tree	2052	Nos.
2	Shrubs	8479	Sq. mts.

Mostly local plant species are planted to increase the survival rate of the plants. A green area or tree plantation around the university helps to arrest the effects of particulate matter and gaseous pollutants in the area besides playing a major role in environmental conservation efforts. These plants are an important part of the landscape designing that aid in reducing the environmental pollution and for minimizing effects like heat, sound, and wind.



The use of local species also reduces the water requirement and water dependency of trees on the water.

LIST OF SPECIES PLANTED AT BML MUNJAL UNIVERSITY			
S.No	NAME	S.NO	NAME
1	NEEM	2	JATI
3	CASSIA	4	JAMUN
5	FICUS	6	AMLA
7	SAGON	8	LEMON
9	PIPAL	10	BAKAN
11	PILKHAN	12	NEELA KATA
13	BADAM	14	LASODA
15	GUAVA	16	MANGO
17	SAGWAN	18	SIRIS
19	TECTONA	20	ARJUNA
21	MOULSARI	22	SHEESHAM
23	ALSTONIA	24	ASHOKA
25	MAROD FALI	26	KAPOOR TREE
27	BARGAD	28	BER
29	JACK FRUIT	30	KIKAR
31	AMALTAS	32	KUREJIA
33	SYMBOL	34	ERYTHRINA
35	FIG	36	GULMOHAR
37	SAPODILA	38	RUDRAKSHA
39	DURANTA	40	ERYTHRINA
41	KINU	42	CHHOKRA
43	CHAMPA	44	JACRANDA
45	SILVER OAK	46	WASHINGTONIA PALM
47	BAMBOO	48	EUCALYTUS
49	BALAM KHEERA	50	HARSINGAR
51	KACHNAR	52	SARIFA
53	PAPADI	54	POMEGRANATE
55	MAHUA	56	POPLAR
57	BER	58	GUDHAL
59	DRY CHEENA	60	BOTTLE BRUSH
61	KADAM	62	UMBRELLA
63	RHAPIS PALM	64	KUREJIA
65	TERMINALIA	66	JUNIPERUS
67	TABEBUIA	68	KHAJOOR
69	BAKAN	70	GURHAL
71	SAPODILLA	72	BEL PATRA
73	SHETOOT	74	FICUS LAYARATA



For effective control of pollutants, in and around the university, a suitable green belt is developed by taking into consideration the following criteria. The green belt assists in mitigation of effects of pollutants:

1. Mitigation of pollution
2. Effective in treated waste water re-use
3. Control of noise pollution to an extent
4. Prevention of soil erosion

Air Quality and Noise Management

Ambient air quality monitoring is done to determine the general background concentration levels. It helps in providing a data base for evaluation of effects of activities in and around the university. It is also useful in ascertaining the quality of air environment in conformity to standards of the ambient air quality.

The sources of air pollution in the region are dust rising from unpaved roads, domestic fuel burning, vehicular traffic, agricultural activities, etc. Analytical methods prescribed by CPCB & approved Indian Standard methods were used for carrying out air quality monitoring.

Air Quality Monitoring is regularly conducted for management of Air quality

Sno	Location	PM-2.5	PM-10	Particles
1	Mr. Jamwal Office	74.3	110.3	9191
2	D-Block Cafeteria	64.9	94.3	8196
3	faculty Housing G. Floor corridor	56.2	81.4	8409
4	faculty Housing G. Floor Creche	60.6	90.1	8804
5	faculty Housing G. Floor Gym	60.5	89.6	8830
6	Laundry Hall	50.9	74.2	7867
7	Near STP	48.9	74.9	7923
8	faculty Housing G. Floor near STP	50.3	77.7	7895
9	E-2 Cafeteria G. Floor	42.7	62.4	7755
10	E-2 MP Hall	74.6	116	10524
11	E-2 Np 212	25.6	37.5	4261
12	Gateway - A	42.3	58.2	6031
13	Gateway - A LGF	23.5	34.1	3487
14	Gateway - A Photocopy Room	26.2	39.3	4551
15	Gateway - A Admin Office	26.6	36.6	3208
16	Gateway - A 307	22.7	34.5	2985
17	Gateway - A 304	23.4	34.2	3317
18	IT Lab	22.3	30.6	2750
19	Library - entry	17.6	26.1	2331
20	Library - near cubical	16.3	23.4	2268
21	Library - inside cubical	19.4	27.1	2405
22	Workshop Main Hall	73.1	109.3	8460
23	Automation Vertical Lab	51.4	74	7951
24	Cafeteria near Library	40.2	57.1	5473
25	faculty Lounge	32.1	49.3	3954
26	D Block	63.3	94.3	9270
27	Gateway - Corridor G. Floor	36.9	54.7	4559

28	Gateway - B Induction Room	23.2	34.9	3087
29	T-113	40.9	60.1	4922
30	Boys Common Room	52.6	79.7	7780

Ambient Noise Quality

The noise beyond acceptable limits also cause noise pollution and there is a regular monitoring of noise level conducted and the safe values have been maintained all through university despite its location on the main road.

Decibel Measurement - BML Munjal University			
S No.	Location	Recorded Decibel level	Remarks
1	Mr. Jamwal Office	58	Satisfactory as per exposure time limit
2	D-Block Cafeteria	68.3	Satisfactory as per exposure time limit
3	Faculty Housing G. Floor Corridor	57.5	Satisfactory as per exposure time limit
4	Faculty Housing G. Floor Creche	65.3	Satisfactory as per exposure time limit
5	Faculty Housing G. Floor Gym	61	Satisfactory as per exposure time limit
6	Laundry Hall	70.1	Satisfactory as per exposure time limit
7	Near STP	56.3	Satisfactory as per exposure time limit
8	Faculty Housing G. Floor near STP	57.8	Satisfactory as per exposure time limit
9	E-2 Cafeteria G. Floor	50.6	Satisfactory as per exposure time limit
10	E-2 MP Hall	48.4	Satisfactory as per exposure time limit
11	E-2 Np 212	64.3	Satisfactory as per exposure time limit
12	Gateway - A	73	Satisfactory as per exposure time limit
13	Gateway - A Photocopy Room	69.2	Satisfactory as per exposure time limit
14	Gateway - A Admin Office	57.4	Satisfactory as per exposure time limit

15	Gateway - A 307	71.2	Satisfactory as per exposure time limit
16	Gateway - A 304	68.3	Satisfactory as per exposure time limit
17	IT Lab	65.3	Satisfactory as per exposure time limit
18	Library - entry	49.8	Satisfactory as per exposure time limit
19	Library - near cubicles	50.8	Satisfactory as per exposure time limit
20	Library - inside cubicles	41.4	Satisfactory as per exposure time limit
21	Workshop Main Hall	73.4	Satisfactory as per exposure time limit
23	Cafeteria near Library	70.2	Satisfactory as per exposure time limit
24	Faculty lounge	68.7	Satisfactory as per exposure time limit
25	D Block	60.5	Satisfactory as per exposure time limit
26	Gateway - B corridor G. Floor	58.7	Satisfactory as per exposure time limit
27	Gateway - B Induction Room	56.4	Satisfactory as per exposure time limit
28	T-113	54.3	Satisfactory as per exposure time limit
29	Boys Common Room	56.7	Satisfactory as per exposure time limit

Transportation Mode :Well-being is a product of being physically as well as mentally fit. The university has full-fledged Department of Physical Education providing state-of-the-art facilities in multi-faceted indoor and outdoor sports. In addition to the fitness regime that has been imparted through gymnasium, the university has been promoting cycling for the purpose of internal transportation and instilling it in the lifestyle. Since cycling is an environment friendly mode of transportation, the university encourages its students and faculty members to ride bicycles inside the university campus.

There are plans to provide Bicycles for use of occupants for internal commuting use. Battery vehicles are used inside the campus for transportation of material thus avoiding the pollution inside campus. The use of E-Vehicles is encouraged and installation of E-Vehicle charging station is in planning stage.

On-Site Laundry

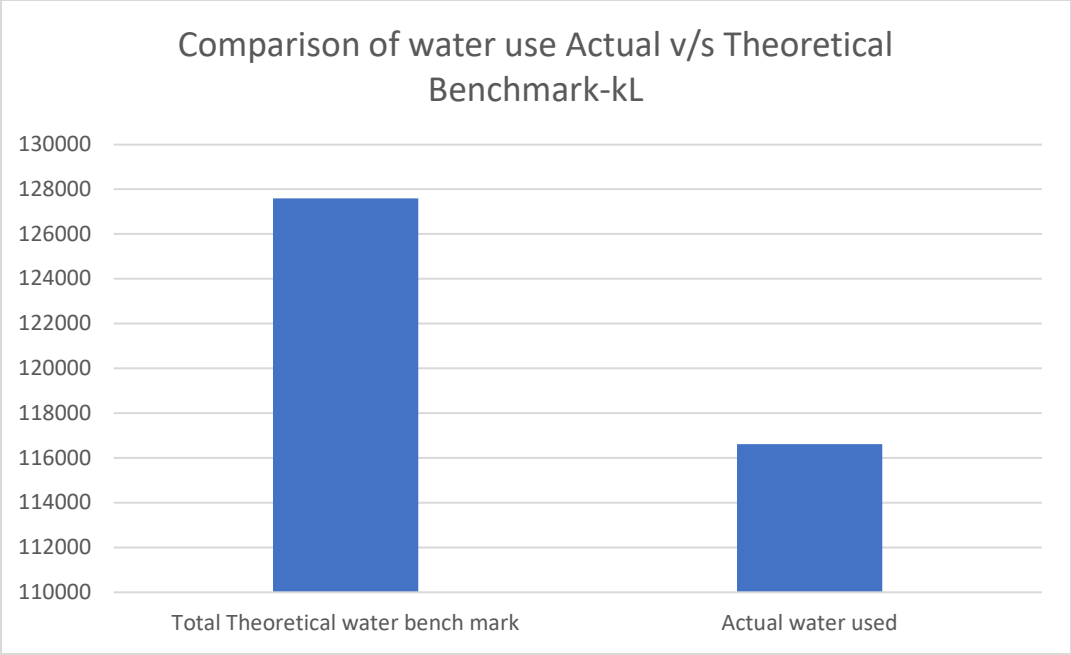
One step of installation of on-site laundry for providing laundry services inside campus for the benefit of resident faculty and students residing in hostels is a big contributor towards sustainability.

The location being away from the main city where the occupants may have to frequently travel with on-site laundry this has been avoided and no fuel is used for commuting to the nearby locations for availing the services of laundry.

D. Water Management

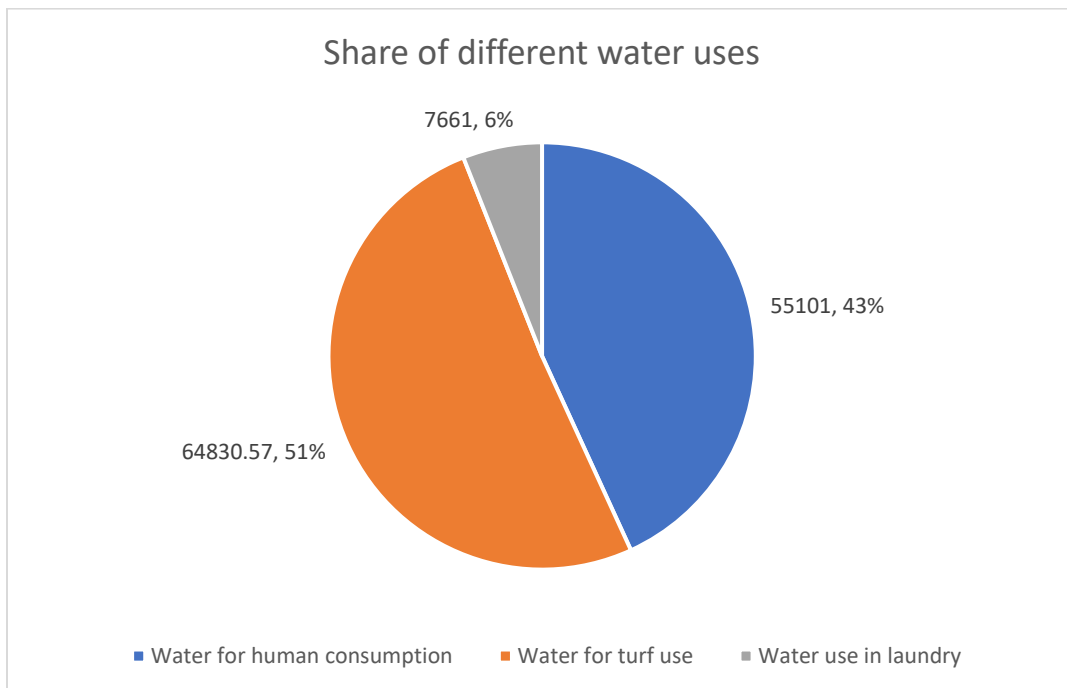
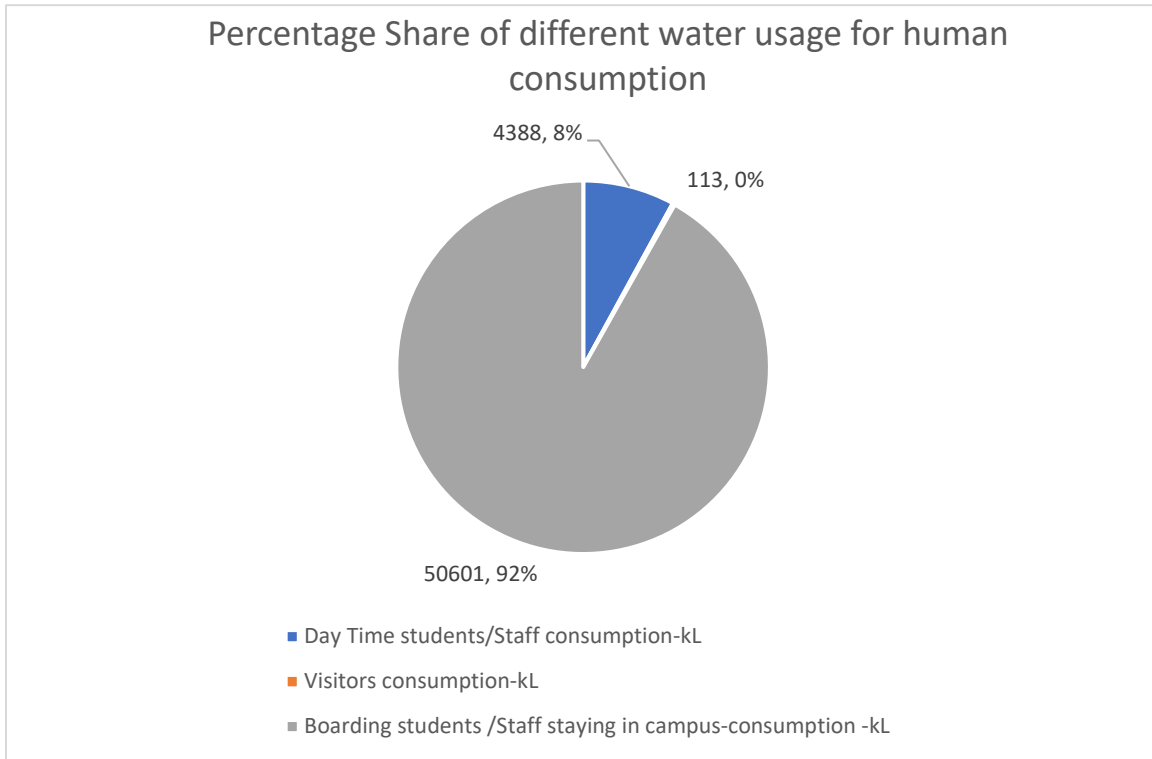
The interventions in the domain of Water such as rainwater harvesting, recycling of water, promotion of water saving techniques demonstrates its alignment with the programs/mission of Water sector as highlighted under the Haryana State Action Plan on Climate Change. The university is situated in the Sidharawali, Gurugram. The university have 2 bore wells inside the campus. The permission of ground water extraction is given by the CGWA. All the buildings with the water pumps are connected with the water meters. The domestic water consumption by the university is distributed in the hostels, faculty blocks and academic blocks.

Water audit is conducted regularly



From the above graph it is evident that present actual consumption of water is lower than theoretical bench mark of water uses as per NBC-2016.

SHARE OF ANNUAL WATER CONSUMPTION-HUMAN USE



There is ample awareness of management of university campus towards sustainability. Management of university is very instrumental in spearheading movement of sustainable practices in running of university and also facilitating dissemination of these practices to all students studying in this campus. It is through support of management and active involvement of other stake holders and staff members that this university has managed sustainable practices by being proactively initiating suitable actions for the same.

In all matters of resource use, there is effective implementation of 3R's. Reduction of resource use, Recycling of resources and also re-use. It is for attaining objectives of sustainability.

STP is installed in campus and is used for re-use of treated water.

The quality of water is also periodically tested and the result of testing are recorded.

For management of water use the following initiatives are taken thus making the use of water sustainable:

1. Water meters have been installed for monitoring the water use of different applications.
2. Two knob/Dual flow cisterns have been installed in campus.
3. Recycled water is used from STP and RO.
4. Rain Water harvesting pits have been installed -20 Nos.

Recycling of Water

STP plant and RO installed in the premises are used for recycling of water

E. Waste management

There is a waste management policy in place for management of different kind of waste for sustainability and averting the ill effects of waste management.



BML MUNJAL UNIVERSITY™

A HERO GROUP INITIATIVE

Policy on Waste Management

The university recognises the need for protection of natural environment and incorporates it as an integral part of good institutional practices. To achieve this university shall develop, implement, and sustain an environment management system of which waste management system is essential constituent.

The university will adopt the principles of best environmental practices as reasonably implementable in the delivery of waste management services and ecological initiatives.

The university will implement waste hierarchal approach to reduce, recycle, reuse, and recover waste products to manage its waste responsibility, reduce the volume of waste sent to landfill and maximise use of recycle and reuse where possible.

The university recognises the importance of compliance of waste management rules and regulations as laid down by the Government.

The university requires that all the students, employees and all other making use of the premises comply with the waste management objectives set in the policy and ensure compliance with statutory guidelines.

The action plan shall include but not limited to waste avoidance and minimisation, segregation of waste at source, reuse, and recycling. The policy includes solid waste, E-waste, hazardous waste, and bio-medical waste.

1. Green Initiatives at University Premises

1.1 Green Audit: The university shall make arrangements to undertake a comprehensive green audit of the existing structures and work operations annually to identify, quantify, describe and prioritize framework of environment sustainability in compliance with the applicable regulations, policies and standards. The objective of the green audit is to improve energy and water usage efficiency, better waste management and all-round management and development of campus in eco-friendly manner for sustainable future. The green audit may consist of the following broad points :

- Water Audit – Water balance consisting of sources, consumption and recycling.
- Waste Audit – Inventorisation of municipal solid wastes, hazardous wastes, biomedical wastes and sources thereof, compostable fraction wastes, segregation of wastes, present practice of waste management inside campus.

Ref No: BMU/RO/2022/038 (e); Date: February 04, 2022; Page 02 of 04



Campus: 67th Milestone, NH-8, Sidhrawali, Gurugram, Haryana - 122413
Toll Free No: 1800-103-6888 | info@bmu.edu.in | www.bmu.edu.in

Mentored by: **Imperial College London**
BUSINESS SCHOOL



**BML MUNJAL
UNIVERSITY™**

A HERO GROUP INITIATIVE

- Energy audit – inventourisation of electrical fittings, fixtures, appliances, machines, etc., energy consumption, recognise energy wastage and leakage points,
- Biodiversity – green cover mapping, tree counting, biodiversity register.

1.2 Green Master Plan: Since there is need to augment the infrastructure on the campus, it becomes quality critical to ensure that the master plan in-line with environment norms of GEM (ASSOCHAN)/IGBO/GRIHA. The upcoming infrastructure and facilities as well as addition to the existing structure and facilities should be developed with a focus on energy efficiency, minimizing waste generation, optimizing power, consumption of power, water and other supplies.

1.3 Energy Conservation: The university will do maximum efforts to reduce energy consumption and use renewable sources of energy as far as possible.

- The points of energy wastage and leakage should be identified and appropriate steps to be taken to set a target of attaining significant energy saving by appropriate modification and adopting best practices.
- The fluorescent lights may be replaced with LED in the existing buildings and streetlights across the campus.
- Use of renewable sources of energy should be increased either by installing solar panels on rooftops as well as suitable open places or by other suitable means.

1.4 Water Management Plan for Optimum Usage of Water: The university shall adopt a sustainable water management plan to prevent wastage of water as well as recycle and reuse wastewater in the university campus.

- Reduction of potable water usage by efficient monitoring, using efficient fixtures and restricting usage for irrigation.
- Installation of rainwater harvesting units at suitable location in campus.
- Use of sustainable horticulture practices.

1.5 Reduction of Carbon Footprints: The university shall do possible efforts to reduce carbon footprints from university A methodology of calculating the carbon footprints of the whole institute should be developed and improvement should be monitored.

- Tree plantation drives on and off campus should be initiated to reduce the carbon footprints.
- Provisions should be made to motivate the staff and students for using bicycle, public transport and/or carpool at least once a week for routine transportation.

Ref No: BMU/RO/2022/038 (e); Date: February 04, 2022; Page 03 of 04



1.6 Plastic Free Campus (avoid using single use plastic): The university shall make provisions to ban the use of single use of plastic at university premises. Various awareness programmes may be initiated to motivate the staff, student and people in surrounding areas to phaseout single use plastic from their schedule.

1.7 Biodiversity, Plantation and Landscaping of Campus: Proper documentation of the flora and fauna at university premises should be done with the help of experts. Further plantation should be done in a planned manner in experts' advice to add both green cover and beauty to the campus. Landscaping of different sizes may be done at suitable open spaces with flowering plants, grass and accessories targeting towards the most beautiful green campuses in surrounding.

1.8 Environmental Stewardship Awards: The university shall announce environment Stewardship Awards from time to time to recognize laudable performances of different departments and communities of the campus for their contribution and implementation of waste management and Eco Initiatives.

1.9 Sensitization Awareness and Capacity Building Programs: The university shall organize various workshops/seminars/dialogues/talks/creative actions/research programmes in order to sensitize the students, staff and community in surrounding about global and local environmental issues for moving towards a resilient future.



Registrar

BML Munjal University, Gurugram

Waste Management Practices

Pollution from waste is aesthetically unpleasing and results in large amounts of litter in our communities which can cause health problems. Plastic bags and discarded ropes and strings can be very dangerous to birds and other animals.

This indicator addresses waste production and disposal, plastic waste, paper waste, food waste, and recycling Solid waste can be divided into two categories:

General waste and hazardous waste. General wastes include what is usually thrown away in schools such as garbage, paper, tins and glass bottles. Hazardous waste is waste that is likely to be a threat to health or the environment like cleaning chemicals and petrol. Unscientific landfills may contain harmful contaminants that leach into soil and water supplies, and produce greenhouse gases contributing to global climate change.

Furthermore, solid waste often includes wasted material resources that could otherwise be channelled into better service through recycling, repair, and reuse. Thus, the minimization of solid waste is essential to a sustainable campus. The auditor diagnoses the prevailing waste disposal policies and suggests the best way to combat the problems. It is therefore essential that any environmentally responsible institution examine its waste processing practices.

Solid waste: Paper is collected and disposed of through sale to recyclers. 620 Kilograms of waste paper has been sold for re cycling that was collected in a period of two years

E-Waste: The old computers are sold back to vendor which is again put to beneficial use by repairing and it is good sustainable practice. Material not reusable is re cycled as per extant guidelines.

Key Boards and mouse which become un-serviceable are also disposed of. It is required to be ensured that vendor dealing with E-waste is authorised to collect E-waste.

Hazardous Waste: Lead Acid Cell Batteries are returned to Vendors for re-cycling of lead and other constituents.

Fluorescent tubes are handed over to Junk dealer who in turn should send them to Local re-cycling units. Storage of Fluorescent tubes in university should be as per recommended practice.

WASTE- Types of waste generated in campus

- E-waste-Yes-Handled as per extant guidelines and rules. E-waste is handed over to authorised re-cycler-M/s Bharat Oil and Waste management Ltd.

E-Waste disposal

The record of use and handling of E-waste is maintained, while disposing/Auction or sale of E-waste credential of purchaser is documented and vendor is authorised for collection and ensuring re cycling of E-waste as per extant guidelines.

➤ **Hazardous waste (toxic)-yes**

For safe handling and management of hazardous waste in an environmentally sound manner, Govt. of India has notified the Hazardous Waste (Management & Handling) Rules, 1989, under the Environment (Protection) Act, 1986. However, these Rules were suppressed with re notification of the Hazardous Wastes (Management, Handling and Trans boundary Movement) Rules, 2008. Under the said Rules, hazardous waste has been defined as those wastes which by reason of any of its physical, chemical, reactive, toxic, flammable, explosive or corrosive characteristics causes danger or is likely to cause danger to health or environment, whether alone or when in contact with other wastes or substances, and shall include wastes as specified in Schedules of the Rules.

- Solid waste-yes-Extra waste removed and disposed in municipal waste collection points
- Dry leaves-Yes-Used in university for making manure/compost
- Canteen waste-yes-Used for Compost in university
- Liquid waste-yes-Preserved and used in university
- Glass-Yes-sent for recycling
- Unused equipment-yes-Returned to vendors through sale
- Plastic waste-Yes-Segregated and removed

Canteen Waste-Handling practice

Food Waste - Standee for Preventing Food Wastage is placed in D Cafe Mess, Food wastage graph as well as the daily quantity chart is also displayed in D Cafe Mess. (Pics attached)

1. Cafeteria
2. Canteen
3. Mess

Zero Food wastage week was celebrated in University in April-2022

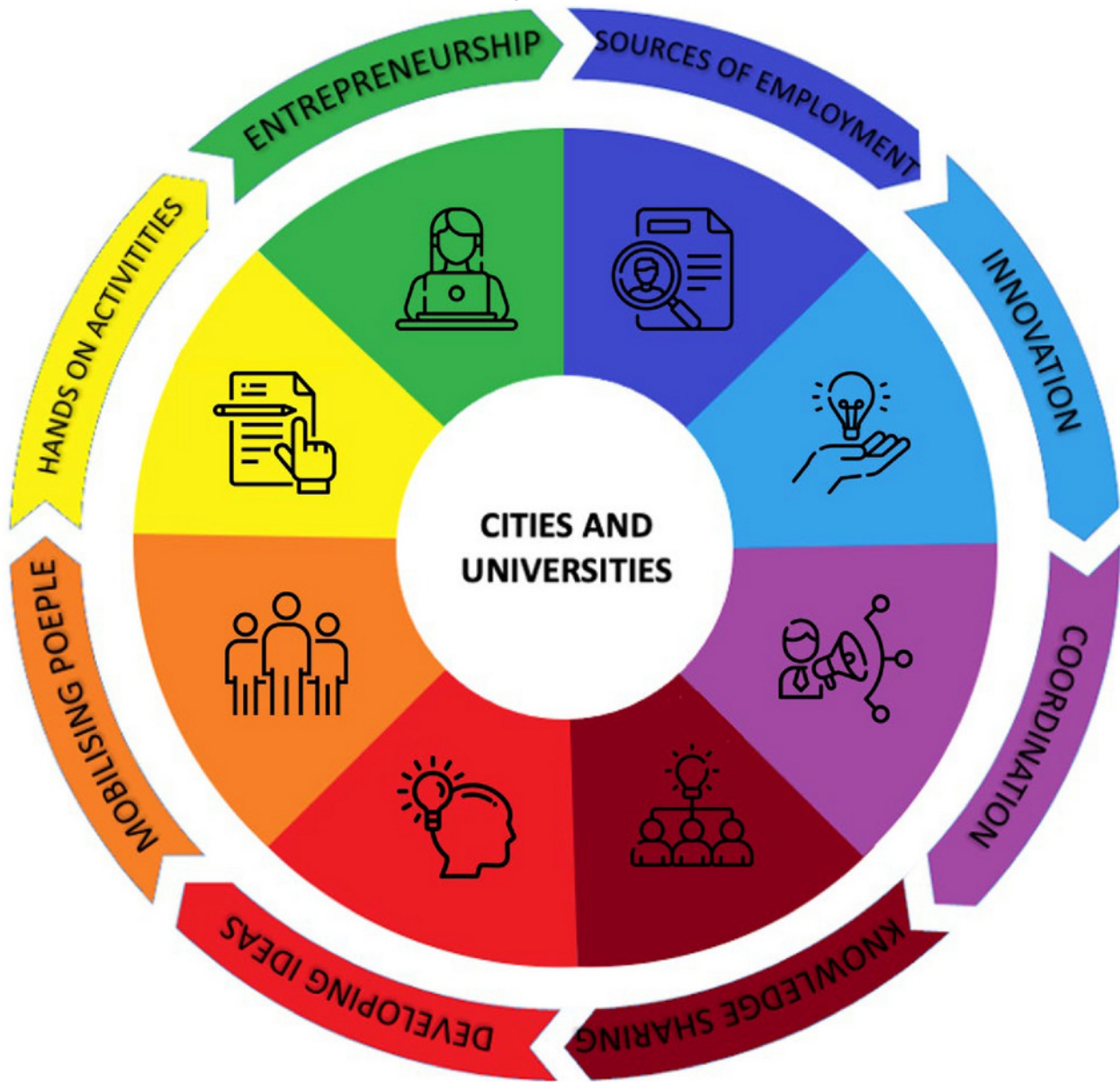


F. Community Engagement

Community engagement activities through NSS

- a. NSS unit was formed in university in year 2018.
- b. NSS has adopted 5 villages in surrounding areas of university campus and the following activities are regularly conducted
 - i. Shram Daan
 - ii. Plantation
 - iii. Activities under Swachh Bharat program.
 - iv. Daan Utsav where in the items discarded by villagers are collected to be distributed to less privileged class people through an NGO -GOONJ.
- c. Survey of five villages is undertaken and is in progress in five villages under UNNAT BHARAT ABHIYAN.
- d. An awareness drive on water conservation was conducted in Bast Pur village-Pataudi-Gurgaon.

4. Social Sustainability



Source: UNDP

A. Prelude

The inclusion and equity are two terms that have a historical context.. However, inclusion and equity promote personal growth and a healthy society. Diversity challenges stereotyped preconceptions; it encourages critical thinking; and it helps students to learn how to communicate effectively with people of varied backgrounds. It strengthens communities and the workplace.

In light of this, BML Munjal has promoted the noble idea of creating an inclusive education system that promotes equity within its campus and through its subjects, especially amongst the students.

A forward-looking thought in this direction has enabled the administration to embark upon creating a Sustainable Development Report that would enable it to not only evaluate itself as an institution, but also open the doors to the world to evaluate the institution inside-out with transparency and reflect the ethos of this institution based on which the foundation of this institution was laid. The university as an institution heightens its own benchmarks to compete with itself.

B. Resolve

The purpose of this study is to establish transparently report all positive and negative contribution towards sustainability and through this reporting prepare a benchmark for the university that would enable to provide higher standards of education and inclusive growth for its students and the communities living around the university campus. The study will ultimately lead to mindful consumption of resources.

C. Intent and Outcomes

The objectives and intended outcome of sustainability reporting of BML Munjal University are as follows:

- Engage with the local community around the university campus for the overall development process, conduct awareness involve community for sustainable practices and empower them through education and adoption as may be practicable at the local level.
- Create a Sustainable Development report in line with the United Nations Sustainable Development Goals (SDGs) as may be applicable to the activities of BML Munjal university.
- Conduct a situational analysis at university level to identify applicable sustainable development goals and provide an implementation action plan in line with the relevant SDGs for overall inclusive development of the university in particular and the community in general.

Outcomes

- Optimized use of scarce resources
- Improvement of knowledge and resource deprived community to be benefitted.
- Good Noise quality for occupants
- Good ambient air quality
- Good illumination quality
- Reduction of resource use.
- Education to students for mastering sustainability practices in their family and professional career throughout their life

D. Sustainable Development Goals and University: Demonstration of the correlation at BML Munjal University

Relevance to SDG

The university is offering an equal opportunity for employment to all irrespective of financial status.

Related Policy / Guideline of the university

Employment manual lays down equal opportunity conditions and university has adopted the norms as per the government of India guidelines in recruitment processes and welfare measures provided to its personnel for all cadres.

Outreach

- Women in general are encouraged to apply and have been provided employment within the institution, the ratio of women to men employed (including staff and faculty) in the institution is monitored.
- All economic and social classes are given equal opportunity for employment in the institution.

Outcome

- Enables to empower rural population.
- Enables larger and positive engagement by the institution with the local communities.
- Bridges the gap that is created of being a large institution and the common community member which encourages local development as well and enhances the local and sustainable incomes and works towards poverty alleviation.
- Enables to create a goodwill and confidence amongst the local communities.

Continued Role of the university

- Create a priority list of the needs.
- Discuss the finances for accomplishing the identified and prioritized needs and create an Implementation Schedule in line with fund availability on annual basis.
- Conducting a “Needs Assessment of each adopted village”.
- Ensuring Fair Trade and ethical supply chains for procuring goods from the market through registered vendors.

End hunger, achieve food security and improved nutrition and promote sustainable agriculture

Relevance to SDG

- Supporting farming activities outside the campus for adopted villages.
- Advisory Support to the famers in terms of equipment, technical training, programmes, etc.

Related Policy / Guideline of the university

The university being a not-for-profit entity has been conducting philanthropic activities as its CSR activities which includes various community activities with the local villagers around the university campus.

Outreach

Being planned

Outcome

Better health and better performance standards of the children in the villages around the campus.

Continued Role of the university

- Offering fresh food markets on campus.
- Facilitating food production on campus.
- Offering fresh food on campus.
- Providing sustainable, nutritious and affordable food choices on campus.

Relevance to SDG

Inhouse medical facility for employees and students with three beds

Related Policy / Guideline of the university

Providing medical facilities, wellness camps and health clubs for the inmates of the university campus by developing the related infrastructure.

Outreach

- Programmes included periodic health camps, awareness on health and hygiene, employment drives, water supply and sanitation amenities, storm water drains, street lighting, etc.
- Providing clean and safe drinking water, safe sanitation practices, better living facilities to the children and to 100% in-house staff within the campus. This also included health facilities to all within the campus with 24x7 medical facilities and access to ambulance at all times.
- Adopting and practicing all COVID-19 WHO guidelines/protocols.

Outcome

The entire campus zone is a non-smoking, no tobacco, no drugs and no alcohol zone.

Continued Role of the university

- Proposing to connect with villages.
- Providing access to affordable health and wellbeing services on campus.
- Implementing 'no smoking' policies on the university campus.
- Ensuring appropriate practices are in place for dealing with hazardous substances.

Goals

4

Ensure inclusive and equitable quality education and promote lifelong learning opportunities for all

Relevance to SDG

- Ensuring inclusive education through practical learning that promotes lifelong learning methods and opportunities.
- Providing state of art international level education systems.

Related Policy / Guideline of the university

International collaboration with Imperial college of London

Outreach

- Translated in terms of effective employment that enables the students to nurture their passion and careers equally.
- Relates to all students across all the faculties.

Outcome

Demonstrated through successful positions and progressing high in their careers indicates the strong foundational training they have obtained from the university.

Continued Role of the university

- Providing programmes to enhance literacy and education in communities and schools in the university's local area and beyond.
- Providing facilities that promote and encourage inclusivity in learning.

Goals

5

Achieve gender equality and empower all women and girls

Relevance to SDG

Policy to provide equal education and employment opportunities to all women and girls

Related Policy / Guideline of the university

Commitment to women empowerment

Outreach

The progression of female to male ratio for students enrolled in the university

Outcome

Providing opportunities to the institution in-house women and women from the neighbouring villages.

Continued Role of the university

- Promote women in the institution based on their merit and performance.
- Providing childcare on campus and promoting workplace flexibility. (Creche is established)
- Participating in national campaigns for preventing violence against women and committing to report on the number of sexual assaults that have taken place at the institution.



Relevance to SDG

- Sewage Treatment Plant (STP) to treat all waste within the campus.
- Effective solid waste management.
- Minimization of water use with drip water use for green area maintenance within the campus.
- Rain water harvesting within the campus and recycle and reuse of the waste water within the campus.

Related Policy / Guideline of the university

- Water management policy
- Waste management policy

Outreach

- Minimization of water use.
- Conservation of water.
- Minimized ground water extraction.
- Managing liquid waste from intruding into surface drains or ground water.

Outcome

- Segregation of waste at source
- Recycling all solid waste.
- Cleaner environment.

Continued Role of the university

- Providing appropriate quality free drinking water for students, staff and visitors.
- Developing management and ownership plans for on-campus biodiversity and ecosystems.
- Work towards achieving zero waste generation campus.
- Management of hazardous, electronic waste and Bio-Medical waste as per extant guidelines of state and ventral pollution control board.

Goals

7

Ensure access to affordable, reliable, sustainable and modern energy for all

Relevance to SDG

- Reduce the consumption of fossil fuel based generated energy.
- Reduce dependence on conventional energy sources.

Related Policy / Guideline of the university

Green energy solar policies adopted by university.

Outreach

Transition from conventional to green power. Utilising solar for the campus power/water heater requirements needs

Outcome

Maximising solar power use within the campus and also contributing to the grid by producing and sharing the excessive solar power.

Continued Role of the university

- Instituting zero-net emission policies and investing in on-campus renewable energy production.
- Developing long term resource efficiency and management plans.
- Decrease dependence on conventional power to Zero and be self-sufficient on power generation versus utilisation. Also create a revenue generating model with solar power generation by contributing excess power to the grid and its neutralization when the use is more than solar generation.

Promote sustained, inclusive and sustainable economic growth, full and productive employment and decent work for all**Relevance to SDG**

Enabling allied economic activities due to the establishment of the university at this location.

Related Policy / Guideline of the university

Inclusive and equal opportunity employer promotes overall economic development.

Outreach

- Apart from promoting inclusive and decent work for all within the campus.
- Providing employment to women members from the local communities.
- Promoted employment to the local people as a primary responsibility.

Outcome

- Better quality of life.
- Positive and effective community engagement.

Continued Role of the university

- Look forward to identifying local talent and nurture that to national and international level, in areas of academics, leadership, cultural and sports areas.
- Supporting creativity and innovation through a culture of acceptable risk-taking, providing the appropriate space and process for ideas to flourish.
- Implementing socially and environmentally responsible procurement policies and procedures, affecting up and down the supply chain.

Build resilient infrastructure, promote inclusive and sustainable industrialization and foster innovation**Relevance to SDG**

- Campus has installed 246 KWp grid connected rooftop solar PV plant at four buildings in university.
- Majority lighting in the campus is LED based
- Water conservation and rainwater harvesting to reduce dependence on groundwater
- Fire and Life safety requirement, emergency preparedness plans in place.

Related Policy / Guideline of the university

Campus is committed to building infrastructure with low material and energy footprint with safe and sustainable campus

Outreach

Adopting energy efficient, water efficient and material efficient construction practices
Fire and Life safety measures.

Outcome

Practices adopted have resulted in green, resource efficient and safe livable campus.

Continued Role of the university

- Plans to augment solar power generation capacity.
- Campus to proceed green rating of their built infrastructure under NAAC in the coming year.

Goals

10

Reduce inequality within and among countries

Relevance to SDG

Under planning

Related Policy / Guideline of the university

Under planning

Outreach

Under planning

Outcome

Under planning

Continued Role of the university

Under planning

Make cities and human settlements inclusive, safe, resilient and sustainable**Relevance to SDG**

Scaling up and delivering sustainable solutions to global challenges developed by the university for the wider community and industry.

Related Policy / Guideline of the university

- Outreach Housing policy.
- Greening policy of the organisation – within the campus.
- Green and Environment audit for improvement of greening.
- Plantation policy

Outreach

Community engagement in campus greening.

Outcome

Encourage green development and enhance the overall environment of the region.

Continued Role of the university

Avenue plantation and designing a plantation calendar so that greening becomes a continuous activity.

Committing to ensure the campus always remains safe, green, and provides accessibility for all levels of mobility.

Relevance to SDG

- Waste is given only to authorised vendors for recycling as per extant government rules.
- Construction and demolition waste is reused
- Proper waste management processes like segregation of waste at source in place

Related Policy / Guideline of the university

The campus is compliant with all the Air, Water and Waste Management Rules as notified by Ministry of Environment, Forests and Climate Change time to time.

Outreach

- Ensuring that resources are used in most efficient manner
- The waste generated are recycled in approved manner.

Outcome

Effective waste handling system is in place in the campus

Continued Role of the university

Committed to zero waste to landfill.

Take urgent action to combat climate change and its impacts**Relevance to SDG**

- Installed 246 kWp solar PV
- Reduction of energy use by inter-active effect of shading with solar PV
- Use of Battery vehicle for saving of fossil fuel in activities of university

Related Policy / Guideline of the university

Committed to reduce GHG emissions through various resource efficiency measure

Outreach

All the conservation practices and landscaping measures are monitored at the top management level

Outcome

Substantial solar PV generation.

Continued Role of the university

Campus to pursue green rating of their built infrastructure in the coming year

Relevance to SDG

- Zero littering in the campus
- All the land-based waste is management in scientific manner

Related Policy / Guideline of the university

No waste is let out on water bodies which will ultimately reach to rivers and to marine waters

Outreach

Ensuring that resources are used in most efficient manner and disposal is also scientific

Outcome

Practices adopted have resulted in green, resource efficient campus

Continued Role of the university

Regular Green and Environment, water, safety and Energy audits.

Goal

15

Protect, restore and promote sustainable use of terrestrial ecosystems, sustainably manage forests, combat desertification, and halt and reverse land degradation and halt biodiversity loss

Relevance to SDG

Resource efficiency

Related Policy / Guideline of the university

- Efficient sprinklers and drip irrigation methods are used to conserve water
- Treated wastewater is used for horticultural activities- (STP and RO Water)

Outreach

Effective landscaping plan in place to maintain healthy ratio of build and green spaces

Outcome

Practices adopted have resulted in green, resource efficient campus

Continued Role of the university

Committed to maintain the green campus

Promote peaceful and inclusive societies for sustainable development, provide access to justice for all and build effective, accountable and inclusive institutions at all levels**Relevance to SDG**

Providing an equal, inclusive and sustainable platform to the students and the staff.

Related Policy / Guideline of the university

- Ensuring that the policies and culture of the institution clearly indicate that bribery, corruption, violence, crime and acts of terrorism is unacceptable.
- Developing policies, procedures and plans to ensure the campus is safe for all staff, students and visitors.

Outreach

Ensuring that all staff and students have access to justice and information about their rights. Involving staff, students and key stakeholders in university governance decisions.

Outcome

Organising cross-cultural and inter-faith activities on campus.

Continued Role of the university

Strengthening the processes involving all stakeholders and the students in the governance of the institution.

Relevance to SDG

Under planning

Related Policy / Guideline of the university

Under planning

Outreach

Under planning

Outcome

Under planning

Continued Role of the university

Under planning

E. Model for self-assessment

a model for a periodic self-assessment that would enable the university to improve upon its performances in relation to the SDGs

Needs assessment within and outside the campus to meet the SDGs on annual basis. Implementing good practices and looking towards creating a benchmark for itself to reach higher levels of excellence.

Situational analysis on sustainability followed within and outside the campus which includes:

Existing policies encompassing sustainability challenges in line with the SDGs;

Existing processes and practices addressing these policies at the ground level; and

Present activities translating these policies and practices in terms of programmes within and outside the campus.

F. Strategy and Continued activities

- Carbon foot-print audit plan
- Continuous stakeholder and community engagement;
- Education, awareness and learning – a road map for community and student engagement programme
- Institutional mechanism for implementation of the Sustainable Development Report
- Design a Schedule for implementation of this Sustainable Development Report;
- Budget allocation for the implementation of this Sustainable Development Report's proposed activities

4. Legal Review of Aspects of Sustainability

A. Introduction

Legal aspects of sustainability deal with the challenge to appropriately define, implement and enforce the scale of human and non-human use of resources, and the distribution of these resources to users and products. The aim of the study of various legal dimensions and parameters of the university was with the intent to analyse the legality and the applicability of the statutory approvals and permissions sought/ to be sought for the effective and smooth functioning of the university by being compliant with law. Legal aspects act as a crucial aspect for any institution to function in an uninterrupted manner. Various legal documents were reviewed in the due process of preparation of this report.

B. Review of the various aspects of sustainability

I Grant of permission for change of land use

Grant of permission was obtained from authority having jurisdiction that was required to be taken at the inception stage of project.

II. Height clearance

Height clearance from the authority as per requirement of law was obtained from the authority having jurisdiction.

III. Occupation certificates

Occupation certificates as applicable for the university location were obtained before initiation of student admission activities.

IV. Grant of concern by local Authority having jurisdiction.

Grant of concern was obtained and is available.

V. Fire-No objection certificate

Fire no objection certificate as per applicability is obtained from the authority.

VI. Environment Impact analysis -approval

Provision environment impact analysis was obtained and its renewal process is under way.

VII. Diesel Generator Sets

- Sound proof DG sets with canopy have been installed.
- Stack of DG sets are as per CPCB guidelines.
- Necessary initial approval as applicable were obtained in the beginning before installation of DG set.

VII. Water Management

The university has all the water management techniques aligned for the purposes of ensuring sustainable development by minimising the usage and subsequent wastage of water. The university has established various water management techniques which are in compliance with the statutory environmental laws as has also been highlighted under the Haryana State Action Plan on Climate Change.

The Central Ground Water Authority (CGWA), Ministry of Water Resources, Government of India for the purposes of extraction of ground water has also given the requisite approvals to the university for the same. The said permissions have been given by the CGWA after conducting their due enquiries and inspections for the same.

IX. Waste Management Agreement

In order to comply with all the necessary provisions of the Environmental Compliances as per the guidelines of the State Environment Impact Assessment Authority, the university has entered into and executed all the necessary relevant Agreements with the registered and approved organisations for the purposes of e-waste management, solid waste collection and handling, safe disposal of hazardous waste (used/waste lube oil) and bio-medical waste management. The university is also in compliance with all the terms of the said Agreements executed between the university and the respective organisations.

X. Lift Registration and annual certificates.

As per the provisions under sub-section (2) of section 4 of the Haryana Lifts and Escalators Act, 2008, the university has attained the life registration certificates for lifts which have been installed in various building premises within the university campus. Needless to say, the registration certificates are renewed on a yearly basis on the basis of inspections.

XI. Commitment to women empowerment

XII. Committee on Gender Sensitisation Against Sexual harassment

In compliance of the Sexual Harassment of Women at Workplace (Prevention, Prohibition and Redressal) Act, 2013, the university already has a BML MUNJAL Committee on Gender Sensitisation against Sexual Harassment (COGSASH) in place. This Committee has been formed keeping in view the university Grants Commission (Prevention, Prohibition and Redressal of Sexual Harassment of Women Employees and Students in Higher Educational Institutions) Regulations, 2015 and BML Munjal university Rules on Gender Sensitisation against Sexual Harassment and recommend measures from time to time for their effective implementation. The committee has been established with 20 members. This committee also has ensured robust leadership by defining positions of a Chairperson and Deputy Chairperson

The Requisite Terms of Reference of the Committee are as follows:

Handle individual complaints; evolve suitable procedures to access committee members.

Awareness-raising efforts about sexual harassment within BML MUNJAL campus; conduct training and sensitisation programmes from time to time; design print and electronic materials on this issue; incorporate this issue in the orientation programmes of new faculty members, staff and students.

Evolve suitable rules and guidelines in this regard keeping in view the UGC rules and Sexual Harassment of Women at Workplace Act, 2013.

Hold public forum meetings with students, teaching and non – teaching staff.

Make suitable recommendations on all the above issues to the BML MUNJAL Administration from time to time to ensure that BML MUNJAL campus becomes a model campus.

In view thereof, it has been observed and an inference has been drawn that the university is in compliance of the requisite provisions of the Sexual Harassment of Women at Workplace (Prevention, Prohibition and Redressal) Act, 2013.

BML Munjal university have notified the revised internal complaints committee (ICC)/committee against sexual harassment vide letter no: BMU/RO/2022/911; dated September 22, 2022. Details of internal complaints committee (ICC)

S.N	Member	Designation	Membership
1	Dr. Jaskiran Arora	Professor & Dean, School of Management	Presiding Officer
2	Dr. Pritam Baruah	Professor & Dean, School of Law	Member
3	Ms. Suneet Soni	Controller of Examinations	Member
4	Dr. Kavita Chawla	Assistant Professor & Assistant Dean, School of Law	Member
5	Dr. Rik Paul	Associate Professor, School of Management	Member
6	Dr. Rupa Murghai	Senior Counsellor, BML Munjal University	Member
7	Dr. Kiran Sharma	Assistant Professor, School of Engineering and Technology	Member
8	Mr. Ankit Kargeti	Student, PhD	Member
9	Ms. Deepika Parasrampurua	MBA Student	Member
10	Ms. Shivani Mittal	B. Tech Student	Member
11	Ms. Anita Gupta	Principal, Raman Munjal Vidya Mandir, Gurugram	Member
12	Dr. Anuj Kumar Rana	Deputy Registrar	Member Secretary

The university has all the licenses and approvals from the relevant concerned Governmental departments and authorities in place.

The university has accomplished a major milestone in attaining various requisite statutory approvals which have also been renewed and maintained by the university over a period of time.

However, the renewal and maintenance of such statutory compliances and approvals is a subsisting process which needs regular follow-ups with the concerned relevant departments and agencies of the Government.

The university is evidently striving to ensure that all such legal compliances and approvals are renewed and are in place.

Such efforts of the university are a positive endeavor towards maintaining a sustainable environment within the campus which shall ensure longevity of the university and the durability of its operations by ensuring timely compliances.

5. Governance & Ethical Framework

A. About BML Munjal University

BML Munjal university is named after the chairman and founder of the Hero Group, Dr. Brij Mohan Lall Munjal, BML Munjal University is engaged in creating, preserving and imparting internationally benchmarked knowledge and skills to a diverse community of students from across the world. BMU's aim is to nurture ethical leaders who are skilled, knowledgeable and have the life skills needed to lead organisations to success.

BML Munjal University is a world class university known for Innovative teaching, learning and research environment.

BMU seeks to transform higher education in India by creating a world-class and innovative teaching, learning and research environment. Founded by the Hero Group and mentored by Imperial College London, BMU is a not-for-profit initiative offering undergraduate and post-graduate courses.

ACADEMIC MENTOR OF BML MUNJAL UNIVERSITY IS IMPERIAL COLLEGE LONDON

BMU is mentored by the Imperial College London, the 108-year-old university.

Imperial College London is closely involved in a wide spectrum of activities such as curriculum design, content development, student exchanges, summer study programmes, joint research activities, digital learning platforms, PhD programmes, faculty training, educational outreach and executive education programmes.

One of the unique attributes of BMU's unique experiential-learning environment will nurture the spirit of inquiry, creativity, problem-solving, entrepreneurship and innovation; and promote hands-on and cross-disciplinary learning; and inculcate a raft of values, job and life skills. This will ensure that BMU students are transformed into well-rounded, industry-ready individuals, who are equipped to take on leadership responsibilities from day one of graduating from the university and ensure a smooth transition to the workplace.

At BMU, the academic structure, curriculum and pedagogy have been designed to break boundaries between different disciplines, bridge the gap between theory and practice, integrate learning and living and synchronize the classroom with the workplace.

Most significantly, the education system has been crafted to promote the spirit of discovery, creativity, problem solving and innovation among students; and make learning an engaging and enjoyable experience. The overarching objective is to develop knowledgeable, skilled, ethical and well-rounded individuals, who are job ready from day one of passing out from the university, and have the potential to lead their organizations to success in the future.

The university was formed under the notified gazette

PART I

HARYANA GOVERNMENT

LAW AND LEGISLATIVE DEPARTMENT

Notification

The 2nd May, 2014

No. Leg. 24/2014.—The following Act of the Legislature of the State of Haryana received the Assent of the Governor of Haryana on the 23rd April, 2014, and is hereby published for general information :—

(HARYANA ACT NO. 21 OF 2014)

**THE HARYANA PRIVATE UNIVERSITIES
(AMENDMENT) ACT, 2014**

AN

ACT

further to amend the Haryana Private Universities Act, 2006.

Be it enacted by the Legislature of the State of Haryana in the Sixty-fifth Year of the Republic of India as follows:—

1. This Act may be called the Haryana Private Universities (Amendment) Act, 2014. Short title.
2. In section 2 of the Haryana Private Universities Act, 2006 (hereinafter called the principal Act),— Amendment of section 2 of Haryana Act 32 of 2006.
 - (i) after clause (n), the following clauses shall be inserted, namely:—
 - (na) "off-campus centre" means a centre of the university established by it outside the main campus but within the State of Haryana, operated and maintained as its constituent unit and having its complement of facilities, faculty and staff;
 - (nb) "off-shore campus" means a campus of the university established by it outside the country, operated and maintained as its constituent unit and having its complement of facilities, faculty and staff;";
 - (ii) for clause (s), the following clause shall be substituted, namely:—
 - (s) "regulating body" means a body established by the

Amendment of section 22 of Haryana Act 32 of 2006. 7. For clause (c) of sub-section (1) of section 22 of the principal Act, the following clause shall be substituted, namely:—
“(c) the Secretary to Government, Haryana, Higher Education Department or his nominee;”.

Amendment of section 23 of Haryana Act 32 of 2006. 8. For clause (b) of sub-section (1) of section 23 of the principal Act, the following clause shall be substituted, namely:—
“(b) the Secretary to Government, Haryana, Higher Education Department or his nominee;”.

Amendment of Schedule to Haryana Act 32 of 2006. 9. In the Schedule to the principal Act, after serial number 14 and entries thereagainst, the following serial numbers and entries thereagainst shall be added, namely:—

- | | |
|---------------------------|--------------------|
| “15. Ashoka University | District Sonapat |
| 16. Al-Falah University | District Faridabad |
| 17. BML Munjal University | District Gurgaon”. |

RAJ RAHUL GARG,
Secretary to Government Haryana,
Law and Legislative Department.

B. Accreditation

Accreditation under NAAC is applied.

C. Rankings

University Ranked 8th in QS World University Rankings® 2019

Rankings of University-

- a) BMU has been incorporated in Delhi Science and Technology Cluster, named Delhi Research Implementation and Innovation (DRIIV), coordinated by IIT Delhi, which will give the students and faculty multiple opportunities to collaborate with top research organizations in the NCR and work on industry-driven, burning and socially relevant.
- b) The School of Management (SOM), BMU has been ranked 54th in the National Institutional Ranking Framework (NIRF) 2022
- c) The Atal Innovation Center from Niti Aayog has started many activities on the campus to build a Culture of Innovation.
- d) BMU has been awarded Diamond Subject Rating in Management by QS I-GAUGE Ratings 2022. The university secured 218 points out of 250 in the management ranking
- e) Sumit Shandilya, School of Management received “Nation Wide Awards Under 40 2022” Industry Expert – Industrial Education Category
- f) Sumit Shandilya, School of Management received CII (Confederation of Indian Industry) Milca Award 2022 for Academia “Platinum Award for Researcher Category”
- g) Dr. Sangita Dutta Gupta received IRSSM-2021 highly commended award sponsored by Journal of Service Management for the paper “Economy of well-being for capitalizing demographic dividend”
- h) Dr. Jaskiran Arora, felicitated by TDI International School for outstanding contribution towards teacher’s education at the Faculty Development Programme as guest speaker
- i) Dr. Sangita Dutta Gupta awarded certificate for publication article published “Hostel Backpack: Entrepreneur’s Dilemma” in case studies on perspectives on entrepreneurship and sustainability at 11th ICMC 2021 International Conference on Management Cases
- j) Dr. Deepak Pandit awarded BABSON Fellows programme certificate for Entrepreneurship research 2021 by Babson Academy.
- k) Dr. Rik Paul and Ms. Rubal Rathi received “Best Paper Award” at the Regional Conference on Marketing and International Business organized by NSU Dhaka.

D. Recognitions

BML Munjal University (BMU) was set up under the Haryana State Private Universities Act on May 02, 2014, vide Haryana Govt. Gaz. (Extra.) and is recognized by the University Grants



BML Munjal University, Gurugram, Haryana has been established by the state legislature of the Government of Haryana by an Act No. 21 of 2014. To view the gazette notification, please [click here](#)



BML Munjal University, Gurugram, Haryana is recognized by apex regulator the University Grant Commission (UGC), New Delhi under Section 2(f) and empowered to award degrees under Section 22 of the UGC Act 1956.

To view the approval, please [click here](#)
To view UGC Compliance Report, please [click here](#)



The School of Law of BML Munjal University is recognized by the Bar Council of India (BCI), New Delhi for imparting legal education. To view the approval, please [click here](#)



BML Munjal University, since its inception, is a permanent member of the Association of the Indian Universities.

E. Collaborations

BMU has collaborated with some of the best global universities - **Imperial College London, London School of Economics & Political Science, University of Warwick and UC, Berkeley**. The collaborations ensure that students get the best learning experience which is modern, experiential and truly global. These universities provide assistance in a wide spectrum of activities which include:



Development of Curriculum and Programme Structure

The curriculum is 'globalized' to ensure that the students get the best education which is internationally relevant and makes them future-ready.



Research Opportunities

These international collaborations enhance our research capabilities, encouraging students to engage in research as a potent form of learning by doing.



Immersion programmes

BMU students have the unique opportunity to study courses at our partner universities, giving them a unique first-hand experience in the global education environment



Guest faculty from partner universities

Top-notch faculty from these universities take subjects at BMU, enriching students by bringing in additional perspectives to research and academics

Collaborations of University

University has collaborated with many national & international organizations. The key MOUs are as follows:

Name of the Organisation/ Institution/ Industry with whom MoU is signed	Category
Imperial College London (Imperial College of Science, Technology and Medicine, London, United Kingdom)	International
Aston University	International
Birmingham City University	International
Asian Association of transfusion Medicine (AATM)	International
Association of Management Development Institutions South Asia	International
Australia India Institute Pvt Limited	International
Bhartiya Skill Development University, Jaipur	National
Central Institute of Plastics Engineering & Technology, Murthal	National
Data Security Council of India, India	National
Department of Management and Innovation system, University of Salerno	International
Ennoble IP	National
Kent State University	International
L&L Partners Law Office	National
North South University (“NSU”) Dhaka, Bangladesh	International
Purdue University Northwest	International
Quality Council of India	National
Saint Mary’s College of California	International
School of Business and Economics, Loughborough University, United Kingdom	International
Tribhuvan University Nepal	International
University of AGDER, Norway	International
University of Michigan-Flint	International
University of North Georgia	International
University of Warwick	International
Milwaukee School of Engineering	International

University has also collaborated with many national industrial organizations. The key MOUs are as follows:

Name of the Organisation/ Institution/ Industry with whom MoU is signed	Category
Adventum Advanced Solution Pvt Ltd	National
Bergen Group	National
Braintech sdn.Bhd.	National
Fintech Infosystem Pvt. Ltd	National
Hero Electronics Pvt. Ltd.	National
Hero Fincorp Ltd.	National
Hero Fincorp Ltd.(IVY League)	National
Hero Future Energies	National
Hero Mind mine Institute Pvt Ltd	National
Hero MotoCorp Ltd	National
Govt of India Niti Aayog	National
M/s. Alfa Beta Institute Pvt. Ltd	National
National Highways Authority of India (NHAI)	National
National Law University (Delhi)	National
Sabudh Foundation	National
Siemes Industry Software India private limited	National
Tessolve LOI	National
Trans-pipe Integrity Solution Pvt. Ltd.	National
VDT Pipeline Integrity Solution	National
Erulearning Solutions Private Limited	National
Herrox Private Limited	National
Tech Mahindra	National

F. University vision

BML Munjal University seeks to nurture ethical leaders who are skilled, knowledgeable and have the life skills required for leading their organizations to success.

The university shall seek the advancement and dissemination of practically oriented knowledge benchmarked with the best global standards.

G. University Mission

BML Munjal University aims to be a leading university for the quality and impact of its teaching, research and linkages with major stakeholders. The focus of the university is to find creative solutions to problems through application of knowledge. The university aims to create a talented community of students and faculty who excel in teaching, learning and research in a creative and stimulating environment. The university will collaborate with other institutions for development of science, technology and arts in the global context.

H. Pledge to empower women

We the teaching, non-teaching staff and all the students of BML Munjal University, Gurugram pledge together for women empowerment and we celebrate advancement of women in all her facets ensuring her safety, security, and overall well-being. We pledge to promote equality and freedom for all, through community initiatives without any gender biases and prejudices. We also pledge to keep our college environment and its surroundings, hygienic, healthy, and clean through active participation of women for the overall sustainable development

Ethics and Governance

6. Conclusion

1. The university has the following policies in place to reduce the impact of its activities on climate:
 - A. Environment and Green policy
 - B. Pledge to empower women in all the applicable activities of the university.
 - C. Plantation Policy
 - D. Waste Management Policy
 - E. Green House Gas Policy
 - F. Paper use guidelines
2. The university is regularly conducting Energy Audit for enhancing and optimizing the energy use of the installed energy consuming equipment.
3. Diesel Generating sets are regularly maintained for optimization of the efficiency of generation.
4. The university has the strict procedural guidance for avoiding the use of paper and the paper is used sparingly only in case of absolutely necessary requirement.
5. The university has very exhaustive E-Library use thus limiting the requirement of Hard copies of books making the library of university sustainable.
6. The water uses are metered and monitored to control the water use. The water is below the National benchmarks.
7. The university is planning the use of eco- friendly house- keeping chemicals.
8. The impact of its activities on the climate change are mitigated with provision of on-site solar PV generation plants summing up to 246 kWp.
9. Battery run vehicles are used in the premises.
10. On-site laundry is saving a lot of fuel and thus making the operations sustainable with avoidance of fuel for transportation both by Faculty and students.
11. The daily requirement items and stationary shops are available inside the university campus making assisting in sustainability.

12. In-house medical facility is existing with three beds.
13. There are awareness and training programs conducted for sensitization of on campus staff and also for off-campus activities.
14. The energy use for different applications is regularly monitored with metering.
15. The residential accommodation for teaching staff, medical officer and other staff is provided on-site for reduction of impact of activities of university on climate through its activities.
16. The hostel accommodation is sufficient numbers provided on site.
17. Car-pool for commuting staff is encouraged.
18. The location of university on national highway mitigates the impact on climate for commuting to university by different stake-holders.
19. All the sustainable development goals of United nations are given due credence for managing the activities and operations of the university where ever these are applicable.
20. Legal Compliances
 - a. The university has all the licenses and approvals from the relevant concerned Governmental departments and authorities in place.
 - b. The university has accomplished a major milestone in attaining various requisite statutory approvals which have also been renewed and maintained by the university over a period of time.
 - c. However, the renewal and maintenance of such statutory compliances and approvals is a subsisting process which needs regular follow-ups with the concerned relevant departments and agencies of the Government.
 - d. The university is evidently striving to ensure that all such legal compliances and approvals are renewed and are in place.
 - e. Such efforts of the university are a positive endeavor towards maintaining a sustainable environment within the campus which shall ensure longevity of the university and the durability of its operations by ensuring timely compliances.

Annexure

Sustainable Development Goals

SUSTAINABLE DEVELOPMENT GOALS



B. Credential of professional

Name: Satvinder Singh

1. BEE Accredited Energy Auditor-AEA-0294
2. Lead verifier -Green House Gas (GHG) -ISO-14064-1 and 14064-2
3. Energy Conservation Building Code Master trainer (Under UNDP-GEF-BEE Project)
4. Indian Green Building Council-Accredited Professional
5. Lead Auditor-ISO-14001-Environment Management system.
6. Certified Monitoring and Verification practitioner-(AEE-USA)
7. Galleleo Master Certificate-Renewable Energy (U.K)
8. Lead Auditor-ISO-50001- BSI-16001 (Energy management system)
9. Lead Auditor OHSAS-18001
10. Attended World Energy conference in USA on three times in Washington D.C-Atlanta and Charlotte (North Carolina)